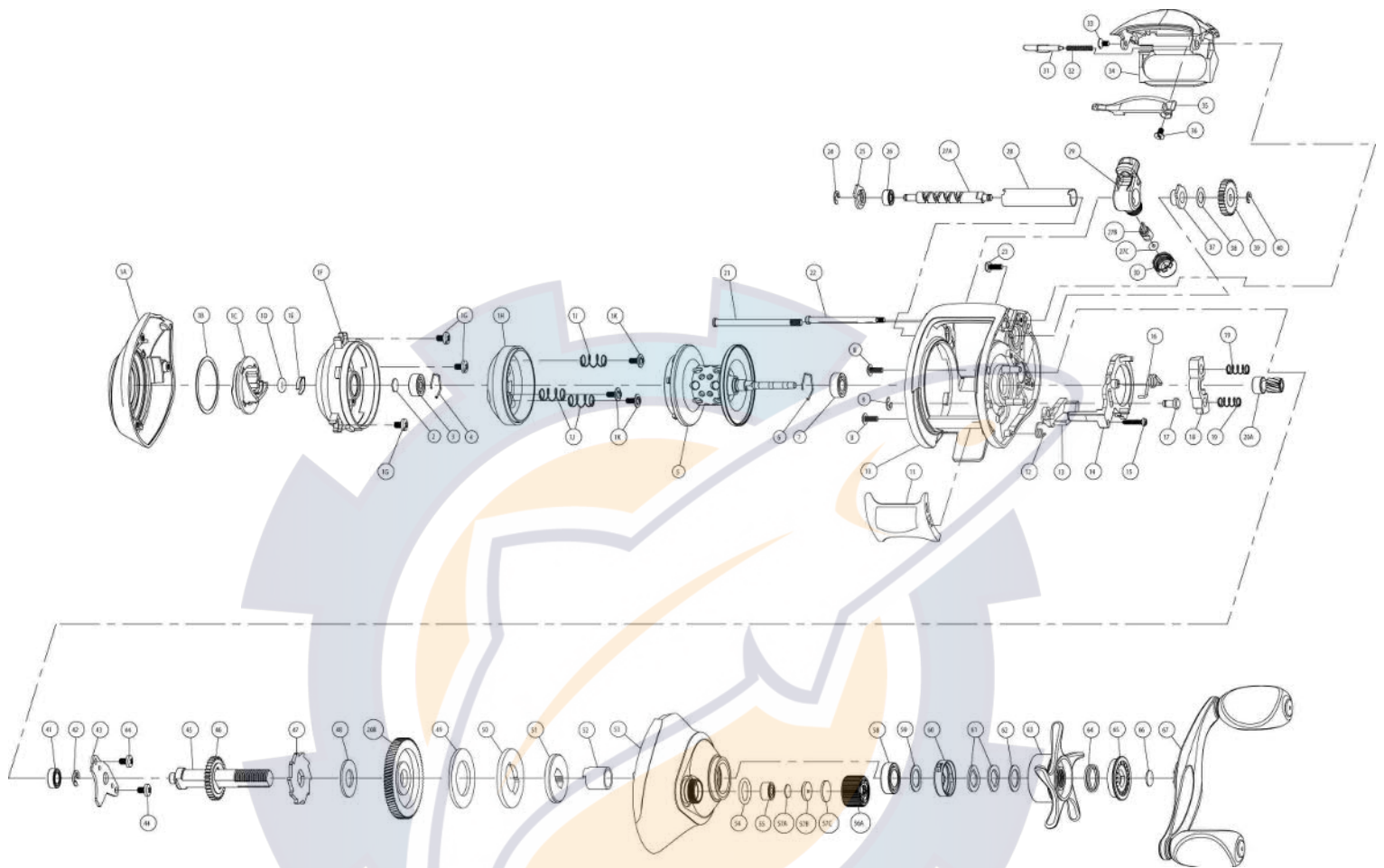


Tour Edition PT Parts Diagram - Right Hand - TE1160PT / TE1170PT

www.reelschematic.com



Key No.	Description	TE1160PT	TE1170PT
1	Palm Side Cover Kit include	UX4023-03	←
	1A - Palm Side Cover Assembly		
	1B - Centrifugal Dial Washer		
	1C - Centrifugal Dial Assembly		
	1D - Centrifugal Dial Friction Ring		
	1E - Centrifugal Dial Spring		
	1F - Spool Cover		
	1G - Spool Cover Screw		
	1H - Brake Ring Assembly		
	1J - Brake Ring Slider Spring		
	1K - Brake Ring Retainer Screw		
	1L - Spool Cover Screw		
	2- Spool Tension Shim		
	3- Spool Shaft Ball Bearing (Palm)		
	4- Clip Ring		
2	Spool Tension Shim	QW032-04	←
3	Spool Shaft Ball Bearing (Palm)	QV017-01	←
4	Clip Ring	HV080-01	←
5	Spool Assembly	UX321-03	UX321-04
6	Clip Ring	EX080-01	←
7	Spool Shaft Ball Bearing (Gear)	EX017-02	←
8	Gear Side Cover Screw - B	QW053-01	←
9	E-Clip	NX092-01	←
10	Frame	UX001-03	UX001-04
11	Thumb Bar	UX009-01	←
12	Kick Lever Spring	GX097-01	←
13	Kick Lever	UX077-01	←
14	Release Slider	UX039-01	←
15	Thumb Bar Screw	ZW053-01	←
16	Release Slider Spring	CX104-01	←
17	Release Slider Guide Pin	UX102-01	←
18	Pinion Yoke	GX025-01	←
19	Yoke Spring	GX040-01	←
20	Gear Kit include	UX4011-01	VX4011-01
	20A - Pinion Gear Assembly		
	20B - Drive Gear		
21	Stabilizer Bar - B	UX061-01	←
22	Stabilizer Bar - A	VX061-01	←
23	Gear Side Cover Screw - A	BX123-01	←
24	E-Clip	NX092-01	←
25	Bearing Retainer	CX067-01	←
26	Worm Shaft Ball Bearing	XX117-01	←
27	Worm Shaft Kit Include	HV4072-02	←
	27A - Worm Shaft		
	27B - Line Guide Pawl		
	27C - Carrier Washer		

Key No.	Description	TE1160PT	TE1170PT
28	Worm Shaft Guide	UX016-01	←
29	Line Guide Carrier	UX047-01	←
30	Line Guide Carrier Screw	ZW007-02	←
31	Side Cover Locking Lever	YX119-02	←
32	Side Cover Locking Lever Spring	ZW096-01	←
33	Hood Screw	HX107-01	←
34	Hood	UX027-02	UX027-03
35	Front Support	UX099-01	UX099-02
36	Front Support Screw	HX107-01	←
37	Worm Shaft Bushing (Gear)	HV068-01	←
38	O/S Pinion Gear Washer	EX035-01	←
39	O/S Pinion Gear	UX085-01	←
40	E-Clip	NX090-01	←
41	Crank Shaft Bearing - Lower	SW017-01	←
42	E-Clip	QW120-01	←
43	Crank Shaft Retainer	UX002-01	←
44	Crank Shaft Retainer Screw	JX107-01	←
45	Crank Shaft	UX008-01	←
46	O/S Drive Gear	UX112-01	←
47	Trip Ratchet	EX083-01	←
48	Trip Ratchet Washer	QW111-01	←
49	Drag Disc	UX059-01	←
50	Drag Key Washer	UX045-01	←
51	Link	UX036-01	←
52	One Way Bearing Sleeve	UX052-01	←
53	Gear Side Cover Assembly	UX324-03	UX324-04
54	Tension Knob O-Ring	QW101-01	←
55	Tension Knob Ball Bearing	SW117-01	←
56	Spool Tension Kit Include	CX4033-01	CX4033-03
	56A - Spool Tension Knob Assembly		
	57 - Spoon Tension Washer Kit		
57	Spool Tension Washer Kit Include	QW4032-01	←
	57A - Spool Tension Washer		
	57B - Spool Tension Collar		
58	Crank Shaft Ball Bearing	TW058-01	←
59	Star Drag Washer	ZW032-01	←
60	Drag Click Spring Assembly	YX4114-01	←
61	"Spring""D"" Washer"	JX046-01	←
62	Star Drag Washer	ZW032-01	←
63	Star Drag Assembly	UX355-03	UX355-04
64	Handle Ratchet Spring	UX040-01	←
65	Handle Ratchet	UX054-01	←
66	Handle Washer	UX032-01	←
67	Handle Assembly	UX318-02	←